



# ANOGEN - A Division of YES Biotech Laboratories Ltd.

2355 Derry Road East, Unit 23, Mississauga, ON, Canada L5S 1V6 • Tel: (905) 677-9221 • Fax: (905) 677-0023

## Mouse Anti-Human FPRL1 2<sup>nd</sup> Extracellular Loop Monoclonal Antibody Datasheet

**Product Name:** mAb anti-Human FPRL1 2nd extracellular loop

**Clone No.:** B7H10

**Catalogue No.:** MO-P40007B

**Quantity:** 0.5 mg/vial

**Description:** Mouse monoclonal antibody against the 2nd extracellular loop of human formyl peptide-receptor-like-1 (FPRL1)

**Purification:** Protein G affinity purified

**Product Type:** Primary antibody

**Target Protein:** The 2nd extracellular loop of human formyl peptide-receptor-like-1 (FPRL1)

**Immunogen:** A short peptide (ASWGGTPEERLKC) corresponding to the amino acids on the 2nd extracellular loop of human FPRL1 is conjugated with KLH for immunization.

**Fusion Myeloma:** Sp2/0-Ag14

**Specificity:** This antibody is reactive to the peptide (ASWGGTPEERLKC) from the 2nd extracellular loop of human FPRL1 and is also reactive to intact human FPRL1.

**Species Reactivity:** Human

**Host / Isotype:** Mouse, IgG1 Kappa

**Formulation:** Lyophilized from a solution in 0.01M PBS pH7.2

**Reconstitution:** Double distilled water is recommended to adjust the final concentration to 1.00 mg/ml.

**Storage:** Store at -20°C. Avoid repeated freeze and thaw cycles.

**Research Area:** G-protein coupled membrane receptor, chemotaxis and Alzheimer's disease.

**Background:** Human formyl peptide receptor-like 1 (FPRL1) is a G-protein coupled seven transmembrane receptor. The receptor can bind to the formyl peptides derived from the degradation of the

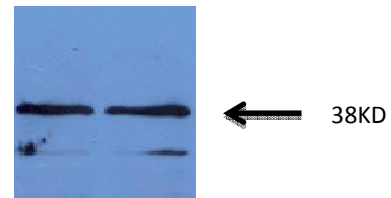
cell wall of infected bacteria and host cells. FPRL1 expressed on the cell surface of neutrophils and other leukocytes mediates the chemotaxis of these cells toward infected site. It has been reported that acute phase protein SAA is also a ligand of FPRL1 and SAA can induce the secretion of IL-8 and TNF- $\alpha$  by neutrophil through FPRL1 signalling. FPRL1 has also been shown to mediate the chemotaxis of microglia by Abeta42 peptide and the internalization of Abeta42 peptide into cytoplasm of macrophage, indicating that FPRL1 may participate in the Abeta42 peptide elicited pathogenesis in Alzheimer's disease.

### Applications:

**ELISA:** In indirect ELISA, the antibody is reactive to the peptide (ASWGGTPEERLKC) from the 2nd extracellular loop of human FPRL1.

### Western blot:

1 2



1&2: FPRL1 /293 cells

Western blot analysis of extracts from 293 cells transfected with FPRL1 DNA using anti-FPRL1 antibody (B7H10) at 1:2000(0.5 $\mu$ g/mL) dilution.

### References:

If research is published using this product, please inform Anogen in order to cite the reference on this datasheet. Anogen will provide one unit of product in the same category as gratitude.

**This product is for LABORATORY RESEARCH USE and further manufacture ONLY, and cannot be administered to human and animals for use in diagnostic and therapeutic procedures.**

**Manufactured by ANOGEN - A Division of YES Biotech Laboratories Ltd.**



## **ANOGEN - A Division of YES Biotech Laboratories Ltd.**

2355 Derry Road East, Unit 23, Mississauga, ON, Canada L5S 1V6 • Tel: (905) 677-9221 • Fax: (905) 677-0023

**This product is for LABORATORY RESEARCH USE and further manufacture ONLY, and cannot be administered to human and animals for use in diagnostic and therapeutic procedures.**

**Manufactured by ANOGEN - A Division of YES Biotech Laboratories Ltd.**

Page 2 of 1 page(s)

S7.5 (02)

To place order, please contact us by phone, fax or by email: [info@anogen.ca](mailto:info@anogen.ca),  
or with our secure online store: [www.anogen.net](http://www.anogen.net)